



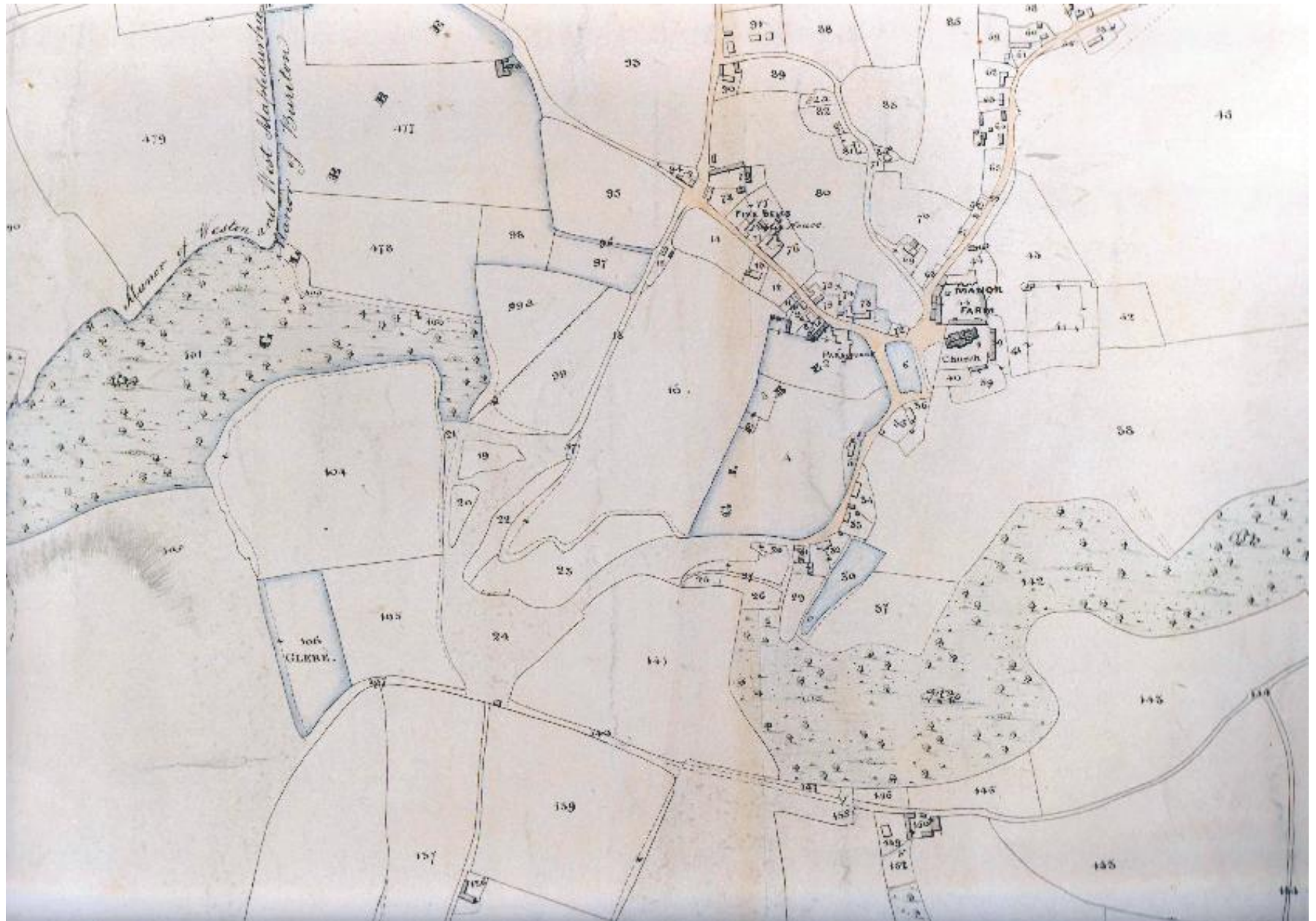
# Buriton Chalk Pits

Changes to a village  
and its landscape

1840 – Today

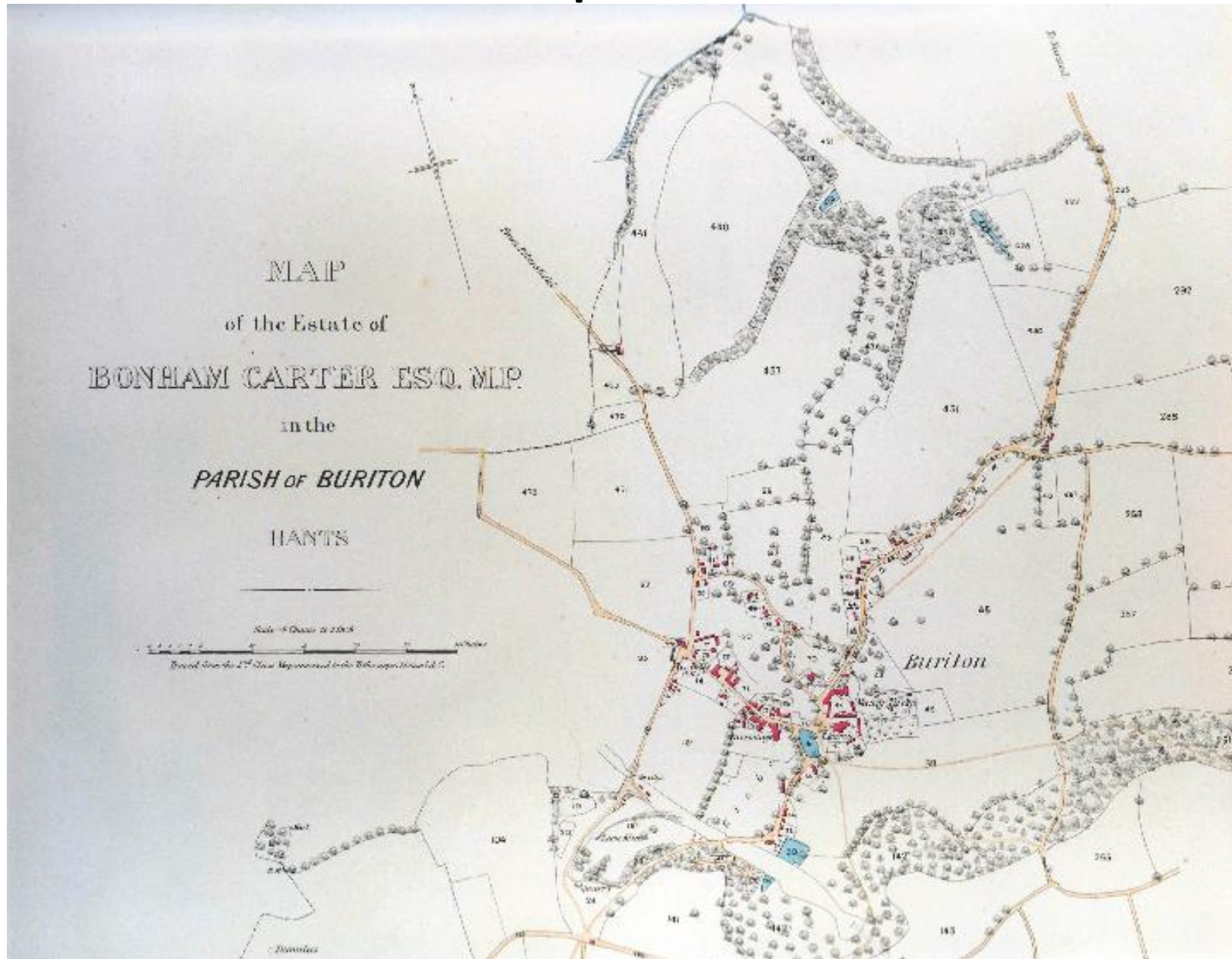


# Map of 1840

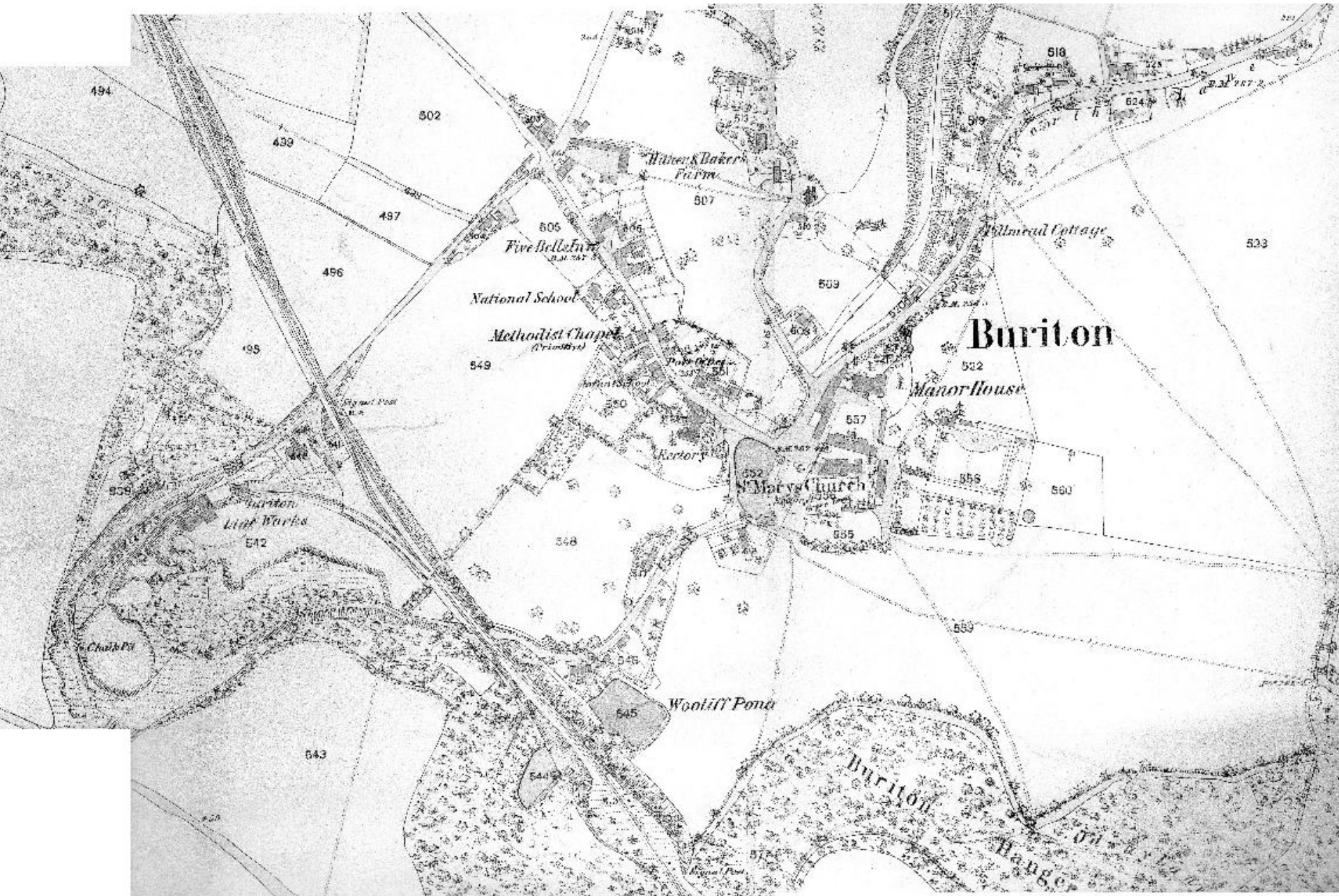




# Map of 1860

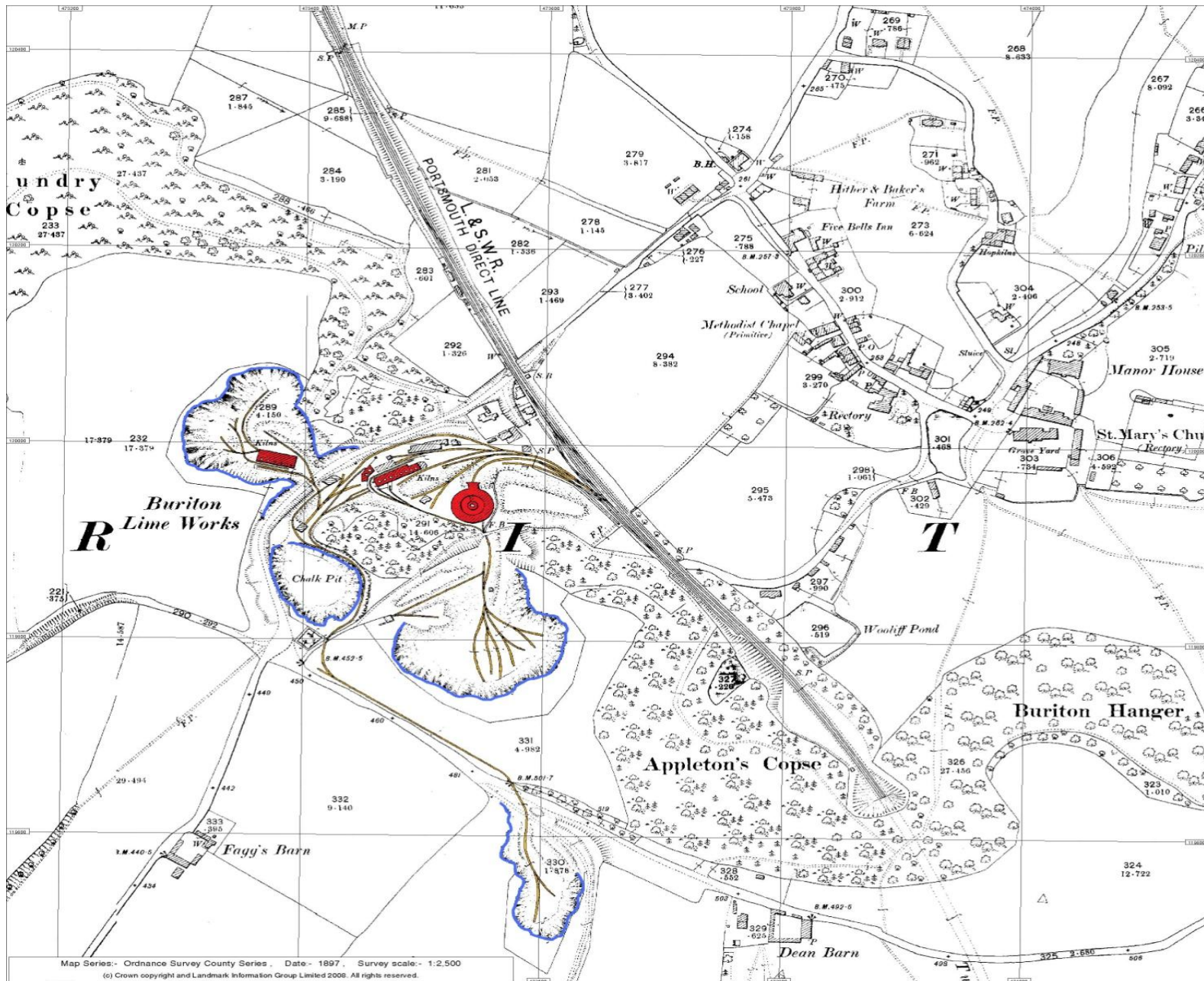


# Map of 1870

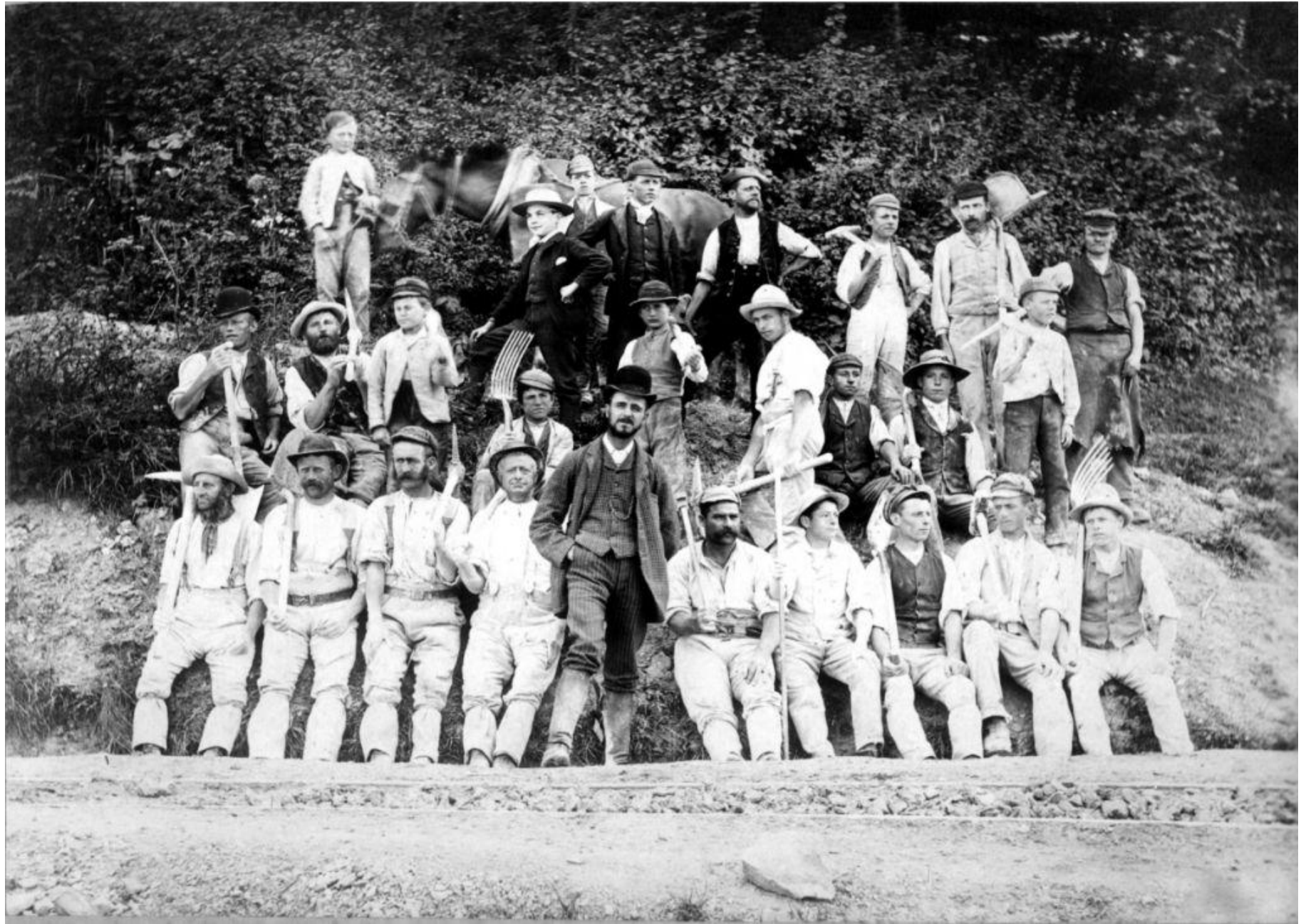




# Map of 1897



# Workers at chalk pits

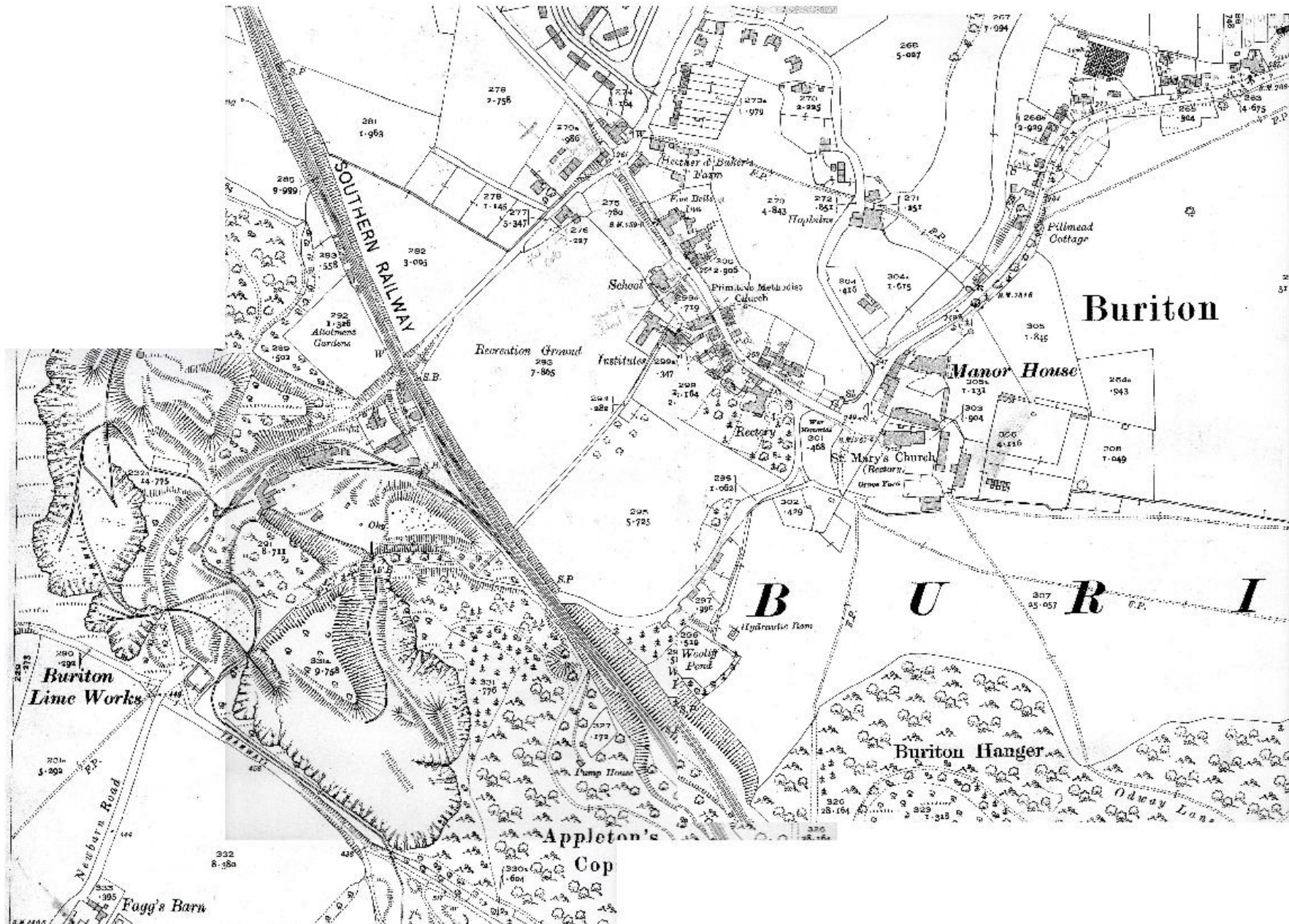


# Examples from 1901 Census

Bones Lane	William	<i>PRETTY</i>	<i>Head</i>	M	29	Chalk ?elter at Lime works	worker	Hants Buriton
	Mary Ann	<i>PRETTY</i>	Wife	M	33			" Basingstoke
	Violet Ethel	<i>PRETTY</i>	Dau		5			" Buriton
	Dorothy Ellen	<i>PRETTY</i>	"		4			" "
	Emma Florence	<i>PRETTY</i>	"		2			" "
	Kathleen Eveline	<i>PRETTY</i>	"		7m			" "
Bones Lane	Albert	<i>STRUGNELL</i>	<i>Head</i>	M	42	Carter on Farm	"	" Buriton
	Catherine	<i>STRUGNELL</i>	Wife	M	41			" "
	Albert	<i>STRUGNELL</i>	Son	S	21	General Labourer Lime works	"	" "
	William	<i>STRUGNELL</i>	"		15	Horse Driver on Lime works	"	" "
	Emily	<i>STRUGNELL</i>	Dau		13			" "
	Lily	<i>STRUGNELL</i>	"		10			" "
	Minnie	<i>STRUGNELL</i>	"		7			" "
	Percy	<i>STRUGNELL</i>	Son		5			" "
	Frederick	<i>STRUGNELL</i>	"		2			"
Petersfield Lane	James J	<i>SQUIBB</i>	Head	M	39	Repairing Engineer (Lime Works)	Worker	Isle of Wight Cowes
	Agnes	<i>SQUIBB</i>	Wife	M	40			" " " Wootton
	Lilian A.C.	<i>SQUIBB</i>	Dau		3			" " " Cowes



# Map of 1932







# Photo of bomb disposal.





# Aerial Photograph of 1950



# Photograph of 1963





# Photograph of 1969



# Map of the current day





# How does the landscape change?

- At what point does the chalk production start to decline?
- Are the changes in the use of the chalk pits reflected in the village? How?